

3 FRAGEN:

- Enterprise Europe Network?
- Förderungen?
- Nutzen?

Helping ambitious SMEs
innovate and grow internationally



The world's largest support Network for SMEs with international ambitions

Boosting growth and jobs

1

The Enterprise Europe Network is a key instrument in the EU's strategy to boost growth and jobs.

2

Launched in **February 2008** by the Commission's DG GROW (previously "Enterprise and Industry" ENTR)

3

Co-financed under the EU's **COSME** and **HORIZON 2020** funding programmes - encouraging competitiveness and innovation of European SMEs

4

Total funding of over **180 million EURO**



3000

LOCAL
EXPERTS



600+

LOCATIONS



60+

COUNTRIES
WORLDWIDE

Based in your region and connected to the world



How do we help?



We combine **international business expertise** with **local knowledge** to take your innovation into new markets.

Our services



A broad range of services for growth-oriented SMEs

INTERNATIONAL PARTNERSHIPS

Partnership database

Brokerage events

Company missions

ADVISORY SUPPORT

Advice on EU laws and standards

Market intelligence

IPR expertise

INNOVATION SUPPORT

Access to finance and funding

Innovation Management Services

Technology transfer

Contact us

www.een.at

Christina Lercher

christina.lercher@standort-tirol.at

A broad range of services for growth-oriented SMEs

INTERNATIONAL PARTNERSHIPS

Partnership database

Brokerage events

Company missions

ADVISORY SUPPORT

Advice on EU laws and standards

Market intelligence

IPR expertise

INNOVATION SUPPORT

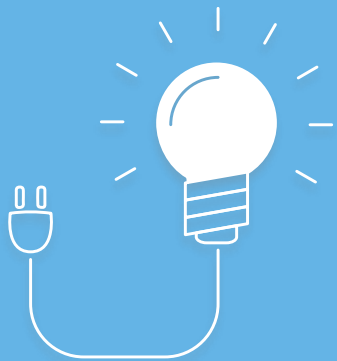
Access to finance and funding

Innovation Management Services

Technology transfer

How it works: innovation support

Tailored support packages to steer you onto the fast track to success.



- Advice and help for innovative SMEs to access R&I funding (H2020, SME Instrument ...)
- KAM services for SME Instrument beneficiaries
- Personalised support to help shape innovation potential into international commercial success
- Help in finding the right technology to improve your innovation
- Help in finding the finance it needs to grow.

A broad range of services for growth-oriented SMEs

INTERNATIONAL PARTNERSHIPS

Partnership database

Brokerage events

Company missions

ADVISORY SUPPORT

Advice on EU laws and standards

Market intelligence

IPR expertise

INNOVATION SUPPORT

Access to finance and funding

Innovation Management Services

Technology transfer

How it works: international partnerships

Partnership Opportunity Database

The Network's business database contains thousands of company profiles to find the perfect match.

✓ Research & Development

17 key sectors

Network experts in 17 key sectors have teamed up to provide you with customised support.



Aeronautics
and space



Agrofood



Automotive, Transport
and Logistics



BioChemTech



Creative
Industries



Environment



Healthcare



ICT Industry &
Services



Intelligent
Energy



Maritime Industry
and Services



Materials



Nano and micro
technologies



Services and
Retail



Sustainable
Construction



Textile & Fashion



Tourism and
Cultural Heritage



Women
Entrepreneurship

17 key sectors

Network experts in 17 key sectors have teamed up to provide you with customised support.



Aeronautics
and space



Agrofood



Automotive, Transport
and Logistics



BioChemTech



Creative
Industries



Environment



Healthcare



ICT Industry &
Services



Intelligent
Energy



Maritime Industry
and Services



Materials



Nano and micro
technologies



Services and
Retail



Sustainable
Construction



Textile & Fashion



Tourism and
Cultural Heritage



Women
Entrepreneurship

Enterprise Europe Network Marktplatz

www.enterpriseeuropenetwork.at

Boosting growth and creating jobs in the EU (2008 – 2014)



10,000
Technology
and business offers
& requests available



7,000
SMEs
Connecting
every month



11,000
companies
have signed
business, technology
or research
partnerships

It works! Satisfied, successful SMEs



SMEs
who use the Network
grow on
average



A large group of people, mostly in business attire, are posing for a group photo in a vast museum hall. The hall is filled with numerous vintage cars of various makes and models, including a red Ford Model T, a blue open-top car, and a dark-colored sedan. The people are arranged in many rows, filling the central space of the hall. The background shows the high ceiling and structural elements of the museum.

How can we help you?

Contact us

www.een.at

een@standort-tirol.at

Follow us at



een_at



Enterprise Europe Network Austria