

Chancen und Gefahren der vernetzten Welt



**Technologien zur Fernwartung und
Fernbedienung von Maschinen**

KEBA Company Presentation



© copyright, all rights reserved

KEBA

Automation by innovation.

KEBA Facts

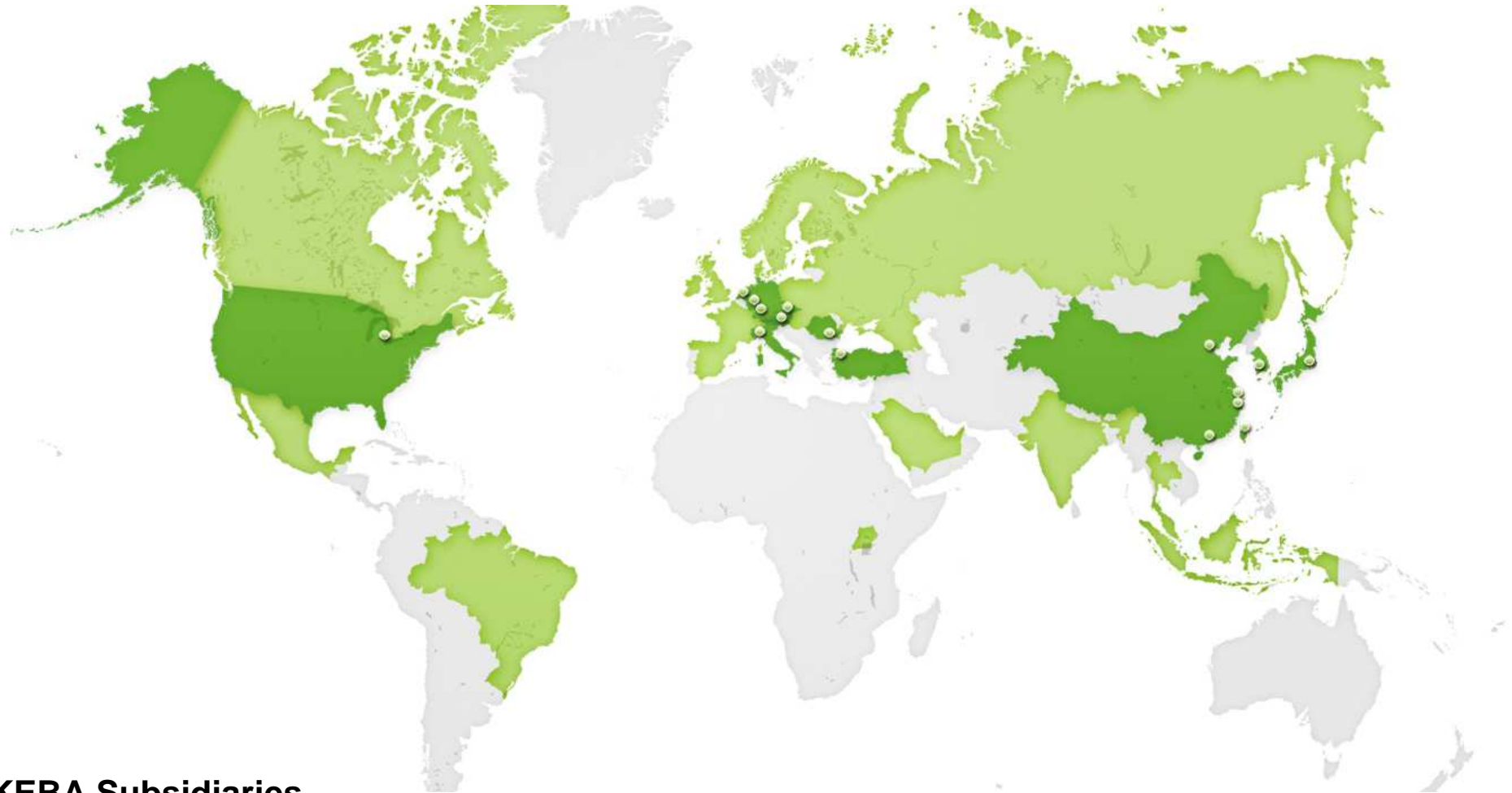


- Established in 1968
- Austrian enterprise
- Owners*:
 - The Kletzmaier Family 55 %
 - Robert Kralowetz 30 %
 - Gerhard Luftensteiner 10 %
 - Franz Höller 5 %
- 810 employees (Group)
- 150 Mio. € sales**
- Exports 80 %
- R & D ratio 16 %
- Certified ISO 9001 since 1994

* broken down over associated companies

** fiscal year FY13 per March 31, 2013

KEBA Internationalization and current markets



● KEBA Subsidiaries
■ Current Markets

© copyright, all right

KEBA

Automation by innovation.

Business Areas of KEBA



- **Industrial Automation**
- **Banking and Service Automation**
- **Energy Automation**

Individual, optimized branch solutions

KePlast



Plastics



KePlast

The optimized automation solution for plastic injection molding machines.

KeMotion



Robotic



KeMotion

The complete industrial robot control solution.

Individual, optimized branch solutions

KeMobile



General engineering



KeMobile

Mobile automation from the technology expert.

KeSystems



General engineering



KeSystems

The automation solution for universal applications in mechanical engineering and plant building.

Banking Automation and Service Automation



KePlus Self-service systems for banks

...cash depositing and dispensing
in a closed circuit

KePol Logistics Solutions

... parcel delivery round the clock

KeWin Lottery Solutions

... for points of sale of any size
and various lotto games



Energy Automation



KeMove - Solutions for E-Mobility
... fast and easy electric vehicle charging
with KEBA

**KeEnergy – controls for alternative
heating systems**
...control energy efficiency with the highest
level of convenience



Thank you for your attention!



KePlast - Host Computing

Plant Monitoring Solutions



KePlast EasyNet.Mobile – SmartPhone

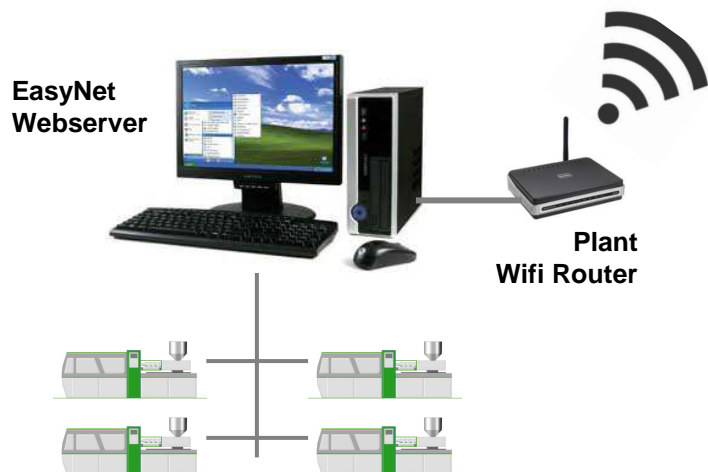


Solution for Smartphone

- Smartphone connected via WiFi to EasyNet
- Plant and machine information in your hand
- Smartphone independent by web browser

See what you need

- Plant manager: Productivity overview
- Service technician: Events for service and production change
- Get informed via E-Mail

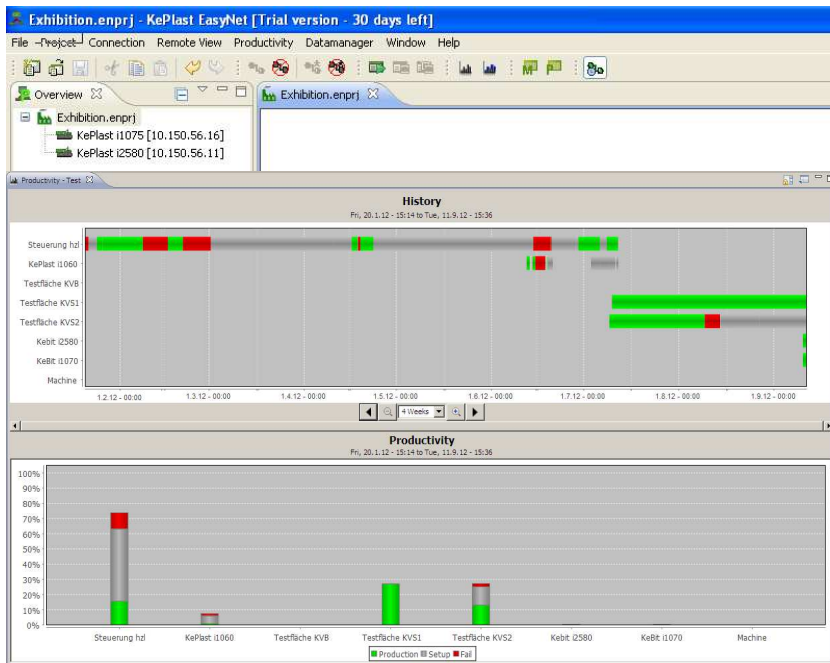


... always be informed

KEBA

Automation by innovation.

KePlast EasyNet – Productivity Monitor



Productivity of your machines at a glance

- Timeline overview of production and standstill
- Intuitive comparison of machine productivity
- Clear overview by bar graphs

Monitor and optimize productivity

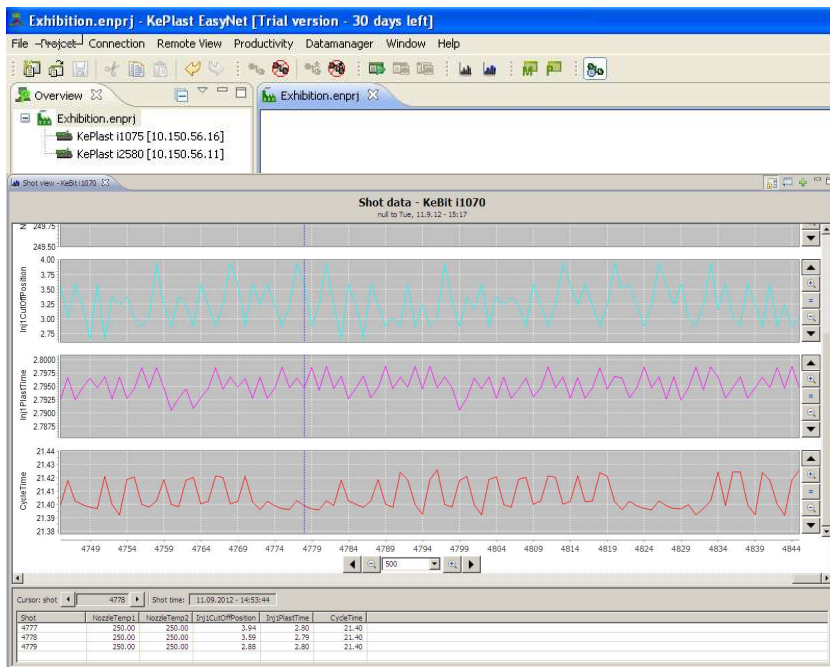
- Historical storage in databank on host PC
- Export of productivity data for offline analysis
- Offline analysis via Excel by CSV format

... optimize your productivity

KEBA

Automation by innovation.

KePlast EasyNet – Quality Data Monitor



Effective monitoring of quality parameters

- Convenient graphical view of each shot
- Out of range detection and cursor function
- Free selection and naming of parameters

Monitor and optimize process quality

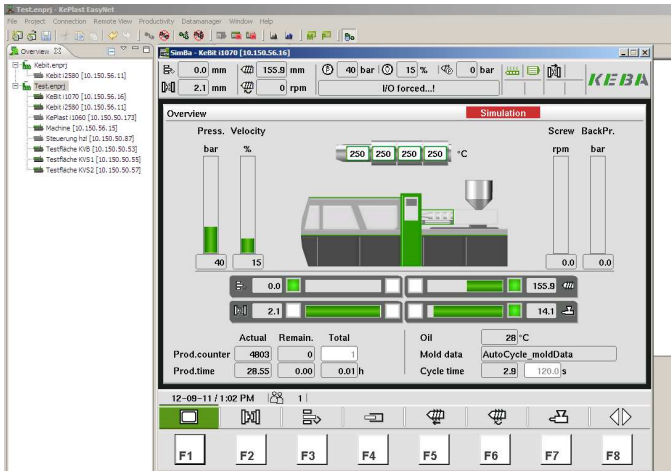
- Historical storage in databank on host PC
- Export of all parameters for offline analysis
- Offline analysis via Excel by CSV format

... a graphic is worth a 1000 values

KEBA

Automation by innovation.

KePlast EasyNet – Remote Machine Screens



Full access to machine screens

- Well known machine screens
- Easy to operate – less training
- Limitation in access – no movement

Monitor machine history

- Check reason for machine stand still
- Infolog – Monitor user activities

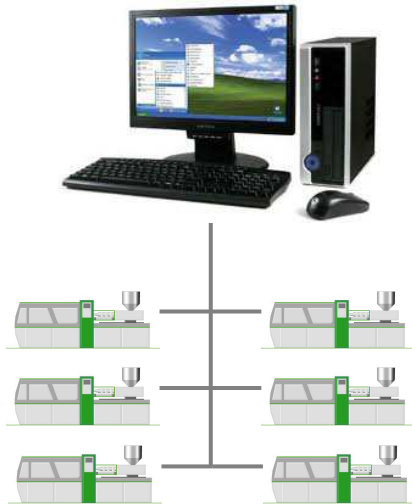
State	Time	Class	Description
⚠	14.09.12 07:56:20	⚠	Cycle time exceeded
⚠	12.09.12 06:40:55	⚠	Mold safety gate open

... have a detailed look in the machine

KEBA

Automation by innovation.

KePlast – Host Computing Solutions



T.I.G.



1 – KePlast EasyNet

- Easy and cost effective plant monitoring
- Get what you really need

2 – KePlast T.I.G

- Professional high end plant computing system
- Multiple plant management at the highest level

3 – KePlast OPC

- Open standard interface for experts
- Solution for host computer suppliers

... connectivity on all levels

KEBA

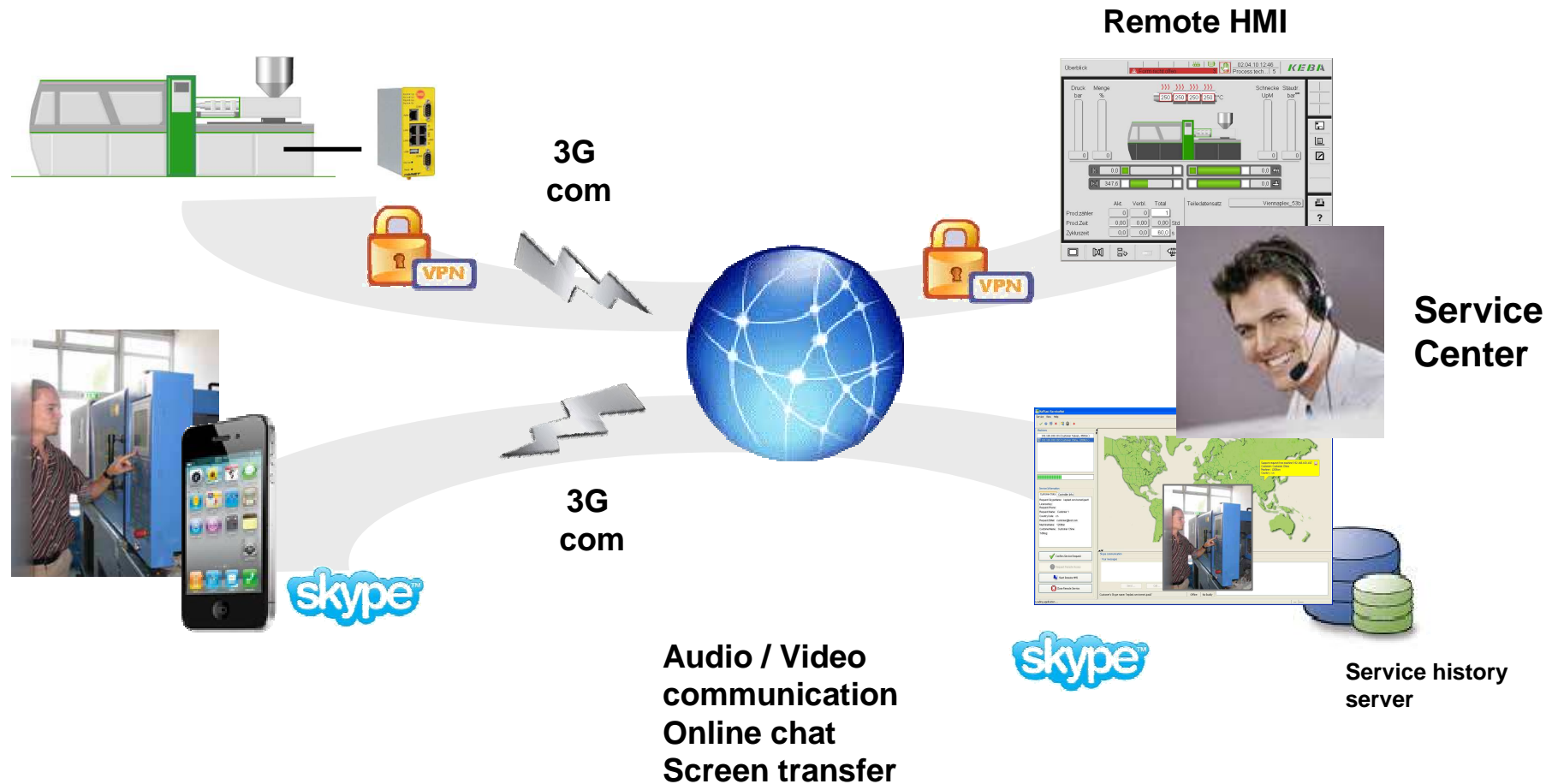
Automation by innovation.

KePlast ServiceNet

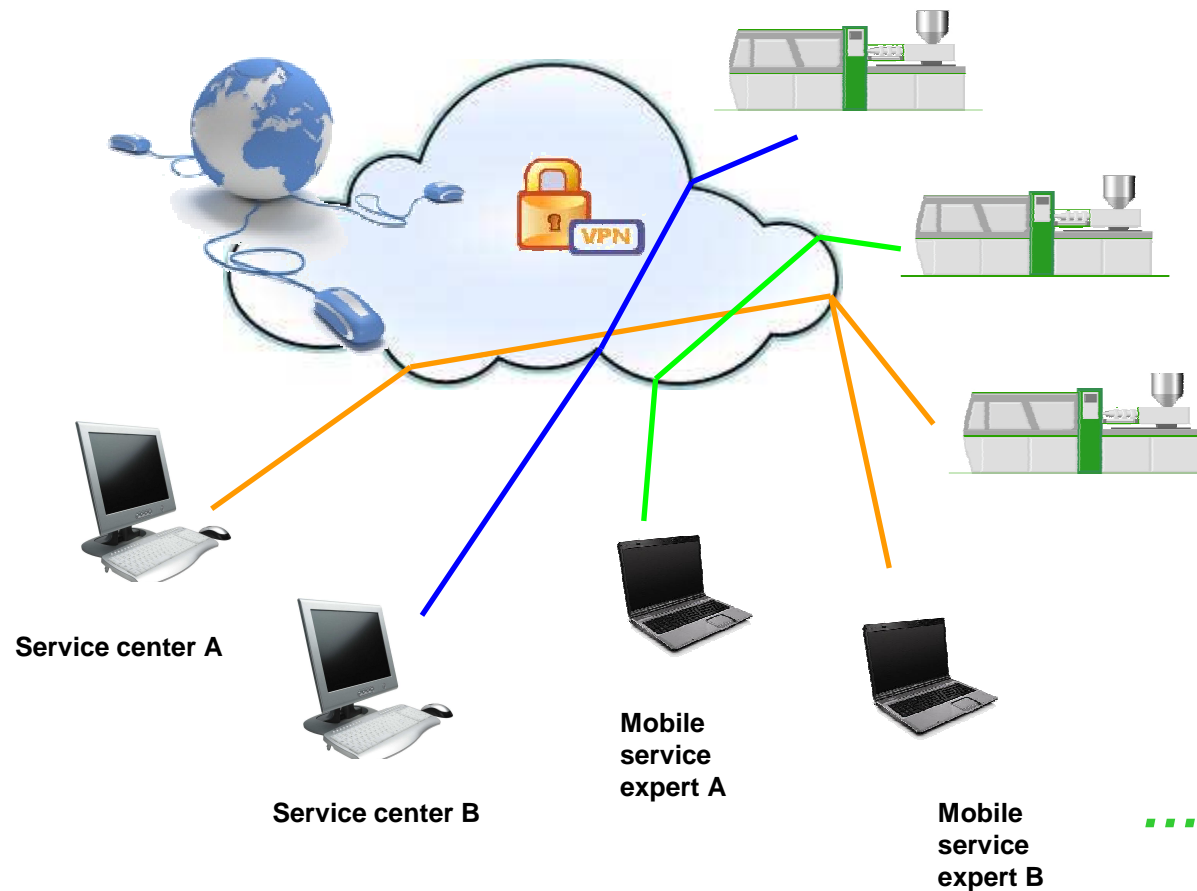
Worldwide Remote Service



KePlast ServiceNet – In Seconds at the Machine



KePlast ServiceNet – Cloud based secure internet connection



High availability all over the world

- Independent from server locations

Best customer protection

- Managed private server accounts

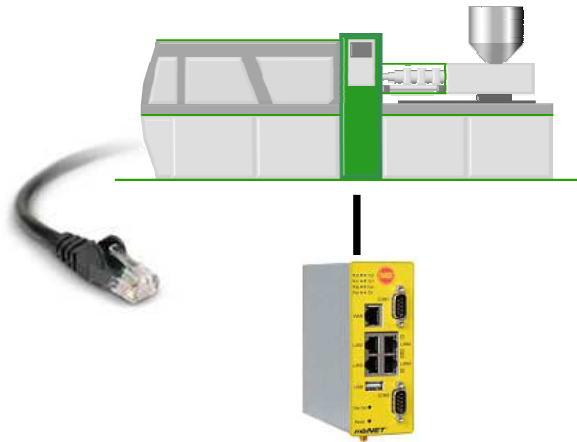
Additional support by mobile service experts

... best service everywhere

KEBA

Automation by innovation.

Plug and Play connection



Service request by pushing a button

Plug in when you really need

- Cost effective portable solution

Preconfigured network settings

- Establish VPN channel automatically

Use your local 3G service provider

- Plug in of SIM card to 3G modem
- Provider data stored in modem

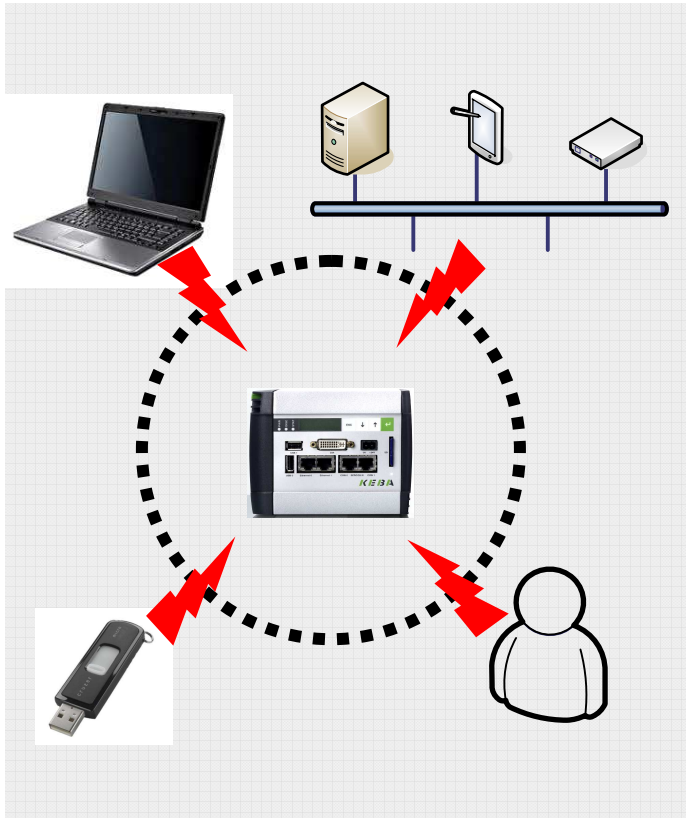
Start communication by one button

- Connect to dedicated service center
- Transfer skype callback information
- Transfer machine identification data and location

... just a minute away

A screenshot of the KEB A support interface. The top bar shows 'Support', a status indicator 'IO forced...!', the time '3/7/11 9:35 AM', and the user 'Process technician | 5'. The main area is divided into two sections: 'Service contact' and 'Machine information'. The 'Service contact' section has fields for 'Contact to' (www.support-a-keba.com), 'My Skype name' (servicetech790188), and 'Status' (Connected). The 'Machine information' section has fields for 'CP Serial number' (P68415-987654321), 'Customer name' (KEBA AG), 'Machine name' (Simulator i2S80), and 'Country name' (AT). At the bottom, there are buttons for 'Connect', 'Disconnect', and 'Setup'. A sidebar on the right contains icons for user, search, and support, with the 'Support' button highlighted.

KeSecure ...Requirements field applications



Requirements for Control Systems

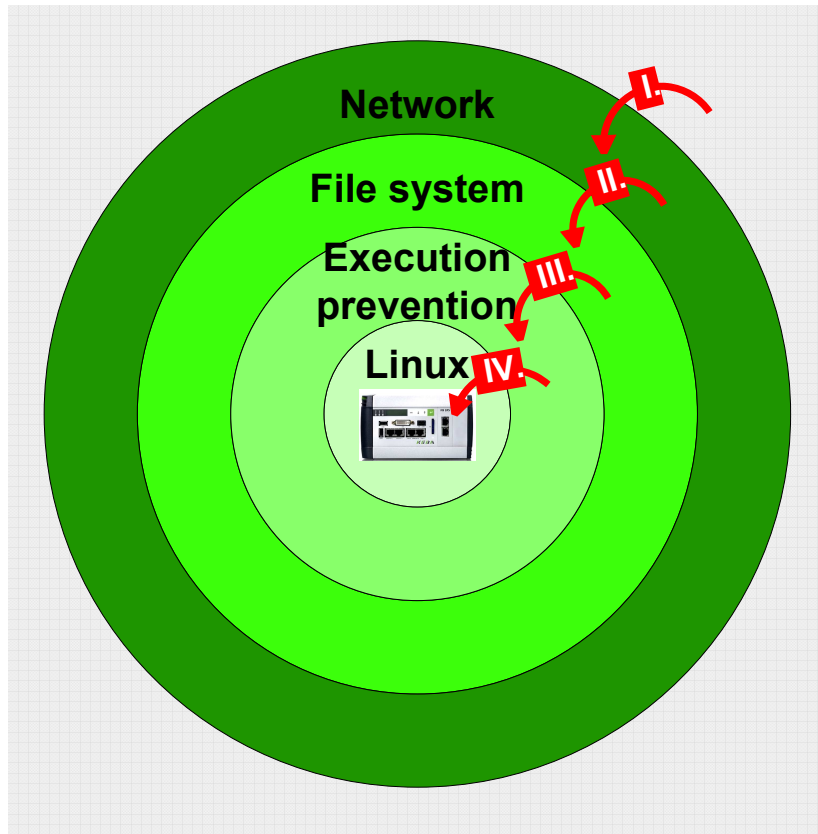
- High availability → continuous operation
- Protection against manipulation
- Because of openness → protection against fail use
- Give malware no chance

Additional problems in field applications

- Threads from network (viruses, worms, trojans, etc.)
- Lots of network communication
- Creative, incompetent usage
- Risk for flash media

...for powerful and safe solutions

KeSecure ...Basic Idea KeSecure for Linux



4 rings for prevention:

1. Network
2. File system
3. Execution prevention
4. Linux

...prevent attacks and make it impossible instead of reacting on attacks



Thank you for your attention !